

11 - BODY SHELL AND BODY JIG

Front frame assembly - Frame upper cross member on 505's, all models

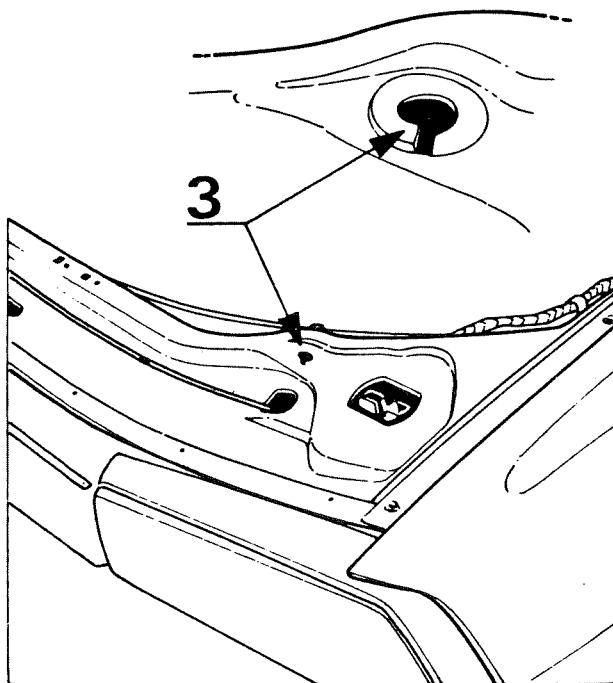
From serial number : 505 . . . 1 471 225

505 vehicles have been fitted with new headlamp load correctors (2).

Consequently, the front frame upper cross members have one hole, diameter 5mm (1) on each side, used to secure the new type headlamp load correctors (2), in place of the former 12 mm diameter spiral hole (3).

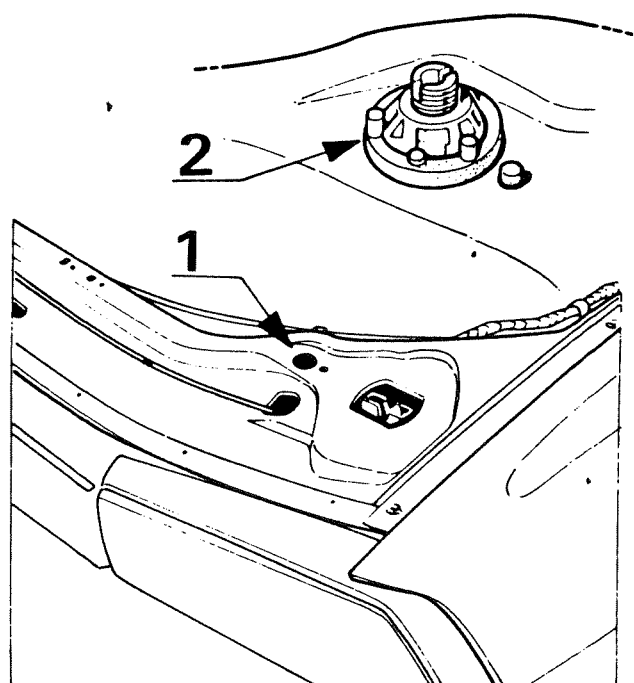
IDENTIFICATION

Early type



A. 5162

Later type



A. 5163

INTERCHANGEABILITY

The Parts Department will supply, under the same part number :

7104.29 Either the early type front frame assembly or the later type

7106.62 Either the early type frame upper cross member or the later type.

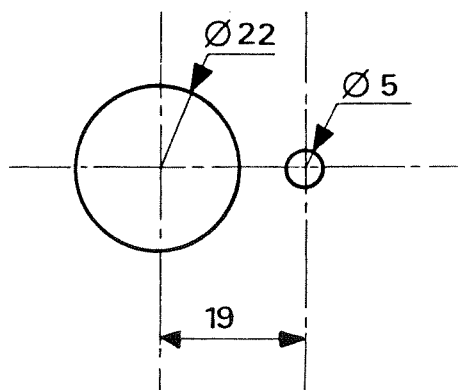
There are two possibilities when replacing a front frame assembly or a frame upper cross member :

1 - Fitting the later type in place of the early type

- . No modification is required. A support which is an integral part of the frame is used to secure the early type load corrector.

2 - Fitting the early type in place of the later type

- . Flatten the spiral flange around the 12 mm diameter hole (3)
- . Increase the diameter of the hole to 22 mm
- . Drill a 5 mm diameter hole in the position shown to accommodate the load corrector retaining spigot.



A. 5164